

# State of Wyoming Corner Record

(In compliance with the *CORNER PERPETUATION AND FILING ACT*, Wyoming Statutes, 1997 Section 33-29-140 et. seq., and the Rules and Regulations of the Board of Professional Engineers and Professional Land Surveyors)

Reverse side of this form may be used if more space is needed.

Record of original survey and citation of source of historical information (if corner is lost or obliterated). Description of corner monumentation evidence found and/or monument and accessories established to perpetuate the location of this corner.  Sketch of relative location of monument, accessories, and reference points with course and distance to adjacent corner(s) (if determined in this survey). Method and rationale for reestablishment of lost or obliterated corner.

**ORIGINAL RECORD:** Set a sandstone 24"x8"x6" set 18 inches in the ground marked with four notches on south edge and two notches on east edge for corner to sections 10, 11, 14 & 15.

**FOUND:** A stone with 4 marks on south-side and 2 marks on east-side.

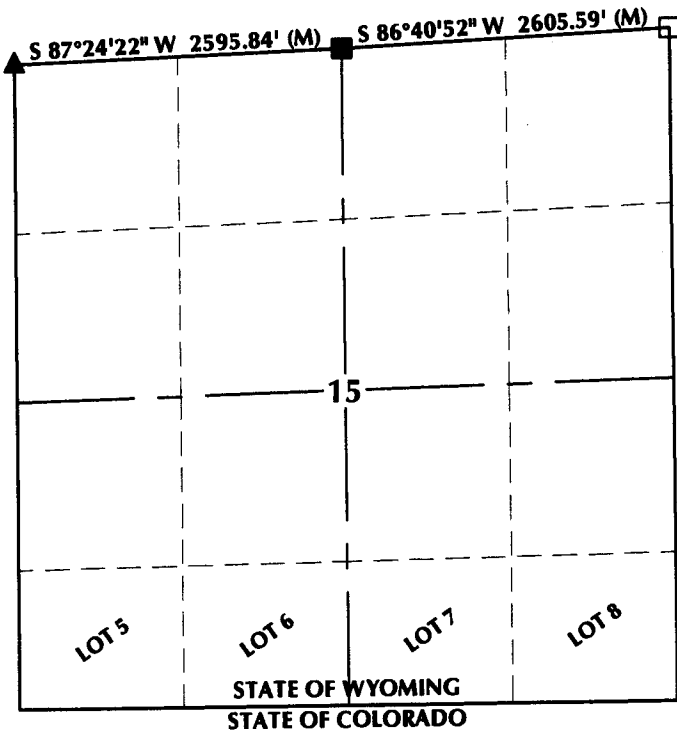
**SET:** Nothing; held stone.



**RECP #: 660267**

**RECORDED 5/4/2015 AT 11:38 AM BK# 2442 PG# 547**  
Debra K. Lathrop, CLERK OF LARAMIE COUNTY, WY PAGE 1 OF 1

## Monument Location



## Monument Inscription

**NOTES:**

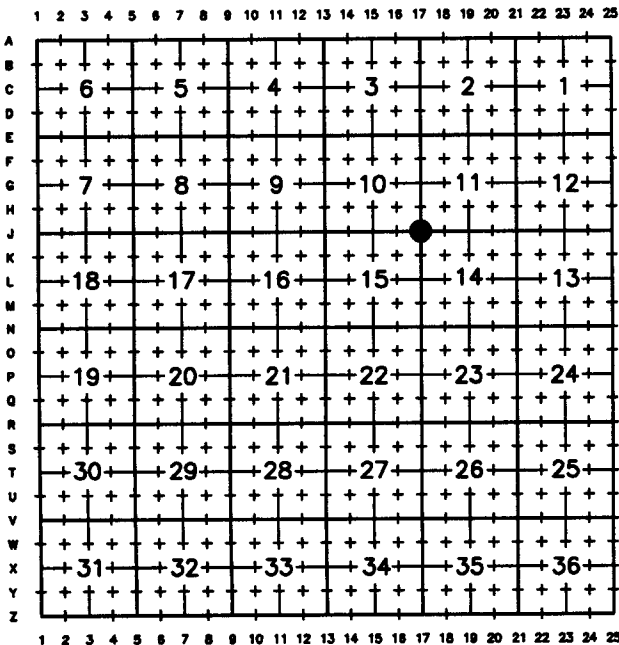
1. ▲ INDICATES FOUND BLM BRASS CAP
2. ■ INDICATES FOUND STONE
3. ● INDICATES FOUND ALUMINUM CAP
4. ◆ INDICATES SET ALUMINUM CAP
5. □ INDICATES SECTION CORNER PER CORNER RECORD
6. BASIS OF BEARING DERIVED FROM WYOMING COORDINATE SYSTEM NAD83 EAST ZONE
7. ALL MEASURED DISTANCES ARE GRID COMBINED SCALE FACTOR: .99971092
8. DRAWING NOT TO SCALE



Date of Field Work: 12/18/14

Office Reference: 14-49

## Cross Index Plat



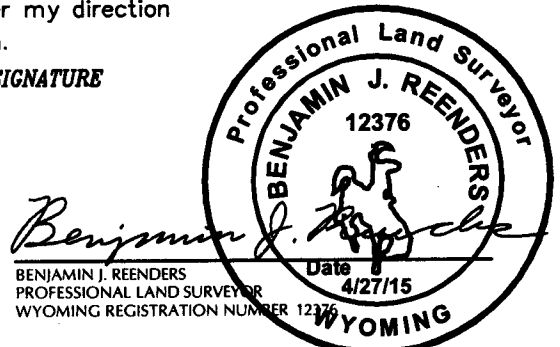
**Land Surveyor/Firm/Address**

609 Consulting, LLC  
1095 Saberton Avenue  
Sheridan, WY 82801

Telephone Number: 307-674-0609

This corner record was prepared by me or under my direction and supervision.

**SEAL & SIGNATURE**



Corner Name: Northeast Corner Section 15, T12N, R64W, 6th P.M. County: Laramie Wyoming

Cross-Index No.: J-17

SBRPEPLS/PLSW: March 1994; PLSW January 1998